

DEDICATED YEAR ROUND PICKLEBALL FACILITIES



Build
Faster

Pickleball
courts





CONNECTING COMMUNITY

NORTH AMERICA'S FASTEST GROWING SPORT

Pickleball is currently the nation's fastest growing sport with a documented 4.8 million players across the country. A sport that has proven its popularity for all ages, pickleball has become a hub for communities to connect, stay active and have fun together.

Year-Round Play

Along with the rapidly expanding popularity of the sport, the demand for dedicated indoor facilities is also on the rise. In many areas, playing outdoors is not an option year-round. Imagine temperature controlled, dedicated pickleball facilities that provide a safe, spacious area for several courts, optional food and beverage area, locker rooms, saunas and more!



WHY BUILD PICKLEBALL FACILITIES WITH SPRUNG?

Exceptional Build Speed

Build in a fraction of the time required for a conventional building.

Lower Costs

Build at a significantly lower cost than a conventional building.

Interior Advantage

The interior of a Sprung structure is engineered and designed for an optimized playing environment with great acoustics, natural light and temperature control.

Flexible Design

Complete customization from the ground up.





A FASTER WAY TO BUILD

EXCEPTIONAL BUILD SPEED

Sprung Structures creates flexible, cost-effective indoor spaces that promote safe and active participation.

Sprung delivers a multi-functional space suitable for any sport or activity. With over two million square feet of available inventory, our prep time to delivery is short, and your building is completed 30% to 60% faster than any other building solution.

With the design and speed you need, Sprung will help to create a better, more active future for your community.



HOW FAST IS FAST?

The following structures were built from ground-breaking to completion in four months.

19,500 square feet for Regis University Berce Athletic Training Center
48,000 square feet for Relentless Life Center Sports and Recreation Complex

INTERIOR ADVANTAGE

HIGH PERFORMANCE INTERIOR

The Sprung interior outperforms other building alternatives with natural light, an airtight building envelope for efficient temperature control, and optimized acoustic playing environment.



“

The acoustics are great, the lighting itself provides a bright environment ... It is a very dynamic and lively place to play.”

- Mario Amantea
Hockey Director, Edge School

HIGH PERFORMANCE INTERIOR

- Clean, bright highly-tensioned interior membrane saves finishing time and money

LOW OPERATING AND ENERGY COSTS

- Airtight building envelope and fully-lofted fiberglass insulation system lowers overall operating costs

LOWER OVERALL COSTS

SIGNIFICANT COST SAVINGS

There are many cost saving opportunities when building a Sprung structure. From operational cost savings to savings on construction materials and timelines, Sprung delivers a high-performance facility on time, and on budget.



The main reasons we decided to build a Sprung structure were the price model and the rapid construction timeline ...we were very impressed with the outcome.”

– Mike Redmond, Associate VP Physical Plant & Capital Projects, Regis University



DESIGN FLEXIBILITY

BUILD IT YOUR WAY

Your clear-span, column-free pickleball facility offers full versatility with a bright, spacious playing area, tall peak height and can include unlimited design customization such as:

- raised running track & viewing bleachers
- locker rooms & saunas
- mezzanines & conference rooms
- peak-integrated daylight panels
- custom doors & glazing walls
- food and beverage, dining facilities



CUSTOM COLORS AND GRAPHICS

- Showcase your brand outside with Sprung's high-performance, guaranteed Dupont Tedlar or Kynar exterior membrane. Choose from a wide range of exterior colors and our new vinyl wrap graphics to elevate your brand.

“

The Sprung sports facility at Hanalani has been a tremendous blessing for our school. The versatility of courts for both volleyball and basketball, plus serving as a multi-use facility for PE and other activities has really expanded our school's creativity.”

– Jeremy Honold, Athletic Director, Hanalani School



EXTRAORDINARY ALL-WEATHER DURABILITY

There are currently over 12,000 active Sprung Structures in 100 countries around the globe:

Sprung's unmatched expertise and experience delivers the world's most reliable, versatile and technically advanced structures.

Our structures are designed, engineered and tested to withstand extreme weather conditions, anywhere in the world.

Following Hurricane Irma in the U.S. Virgin Islands, the U.S. Federal Emergency Management Agency (FEMA) selected Sprung Structures to supply seven gymnasiums as emergency response stations.

The Sprung gymnasiums were engineered to withstand 175 mph wind loads per the 2018 International Building Code (IBC 2018).



In extreme winter weather conditions (100 km plus winds and temperatures of -35C) Sprung modified their construction process to allow mechanical and electrical contractors to work simultaneously, and reduce the overall schedule.”

– David Lunn, Director of Facilities,
Christ the Redeemer Catholic Schools

FEATURES AND ACCESSORIES

UNLIMITED DESIGN FLEXIBILITY

Beyond the flexibility of Sprung's expandable modular design, add greater value and versatility by customizing the accessories (doors, windows, connecting corridors, graphic treatments, etc.).

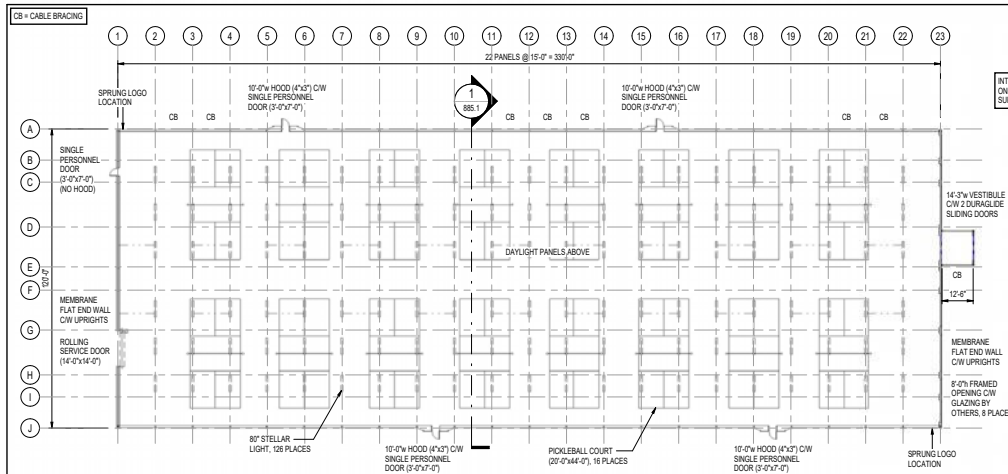
PICKLEBALL FACILITY OPTIONS

Option 1: Engineered sunshade

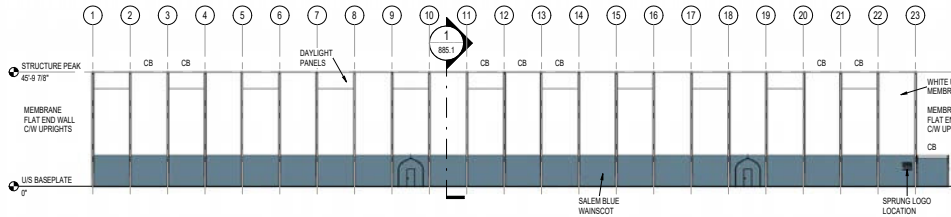
Option 2: Year-round climate-controlled facility



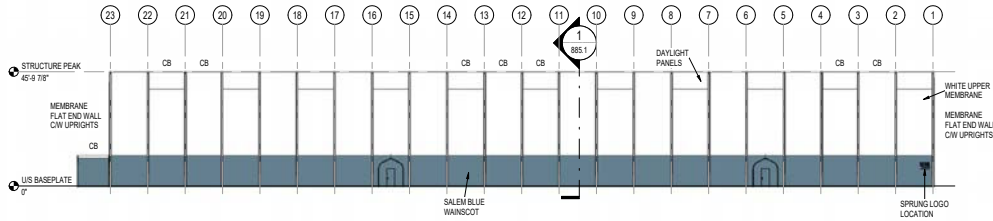
16 COURT LAYOUT



1 OPEN PLAN VIEW
1" = 20'-0"



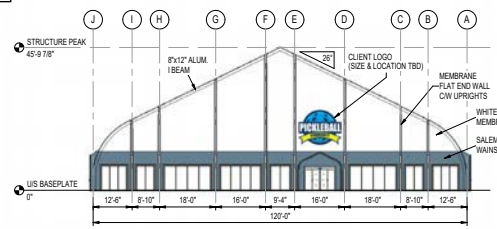
2 FRONT ELEVATION
1" = 20'-0"



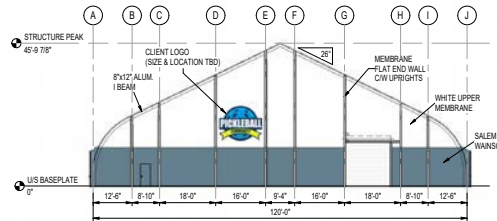
3 REAR ELEVATION
1" = 20'-0"



4 EXTERIOR VIEW RENDER 1
885.0



5 RIGHT ELEVATION
1/16" = 1'-0"



6 LEFT ELEVATION
1/16" = 1'-0"

ACCESSORIES				
CATEGORY	TYPE	SIZE	COMMENT	COUNT
CARGO DOOR	ROLLING SERVICE DOOR	14'-0" x 14'-0"	INTERIOR MOUNT	1
GLAZING	FE GLAZING	5'-0" x 8'-0"	FRAME ONLY	2
GLAZING	FE GLAZING	8'-0" x 8'-0"	FRAME ONLY	1
GLAZING	FE GLAZING	8'-0" x 8'-0"	FRAME ONLY	2
GLAZING	FE GLAZING	12'-11" x 8'-0"	FRAME ONLY	1
GLAZING	FE GLAZING	14'-11" x 8'-0"	FRAME ONLY	2
LIGHTING	STELLAR LIGHT		40"	128

PERSONNEL DOORS							
CATEGORY	TYPE	HOOD WIDTH	BEAM	DOOR SIZE	COMMENT	SWING	COUNT
HOOD	SPD	10'-0"	4x3"	3'-0" x 7'-0"	STANDARD	1	1

DRAWING APPROVAL

APPROVED
 APPROVED BY CHANGES NOTED

CONFIRMATION OF DESIGN LOADS AT SITE PER THE LOCAL BUILDING DEPT.

SIGNATURE: _____
 DATE: _____

BUILDING CODE #1 YEAR: _____
 WIND LOAD (PSF): _____
 SNOW LOAD (PSF): _____
 SNOW LOAD (SI): _____

GENERAL NOTES:

1. ALL PERSONNEL DOORS ON FRAMING MEMBERS & HOODS, AS NOTED.
2. STRUCTURE TO BE INSULATED WITH FIBREGLOSS 80% REFLECTION CW FRAMER LINER, TO CARLIGHT PANEL LEVEL ONLY (NO HOODS).
3. INNER & OUTER MEMBRANE TO BE FINISHED TO CONCRETE USING ALUM. FLAT MAT.
4. STRUCTURE MEMBRANE MEETS NFPA 701 CALIFORNIA STATE FIRE MARSHAL, AERIALS, ONALUS-818, KOWALSKI-92 SPECIFICATIONS.
5. THIS STRUCTURE IS DESIGNED TO BE PRESSURE BLOWN. THE POSITIONER OF THE STRUCTURE SHALL BE KEPT CLEAR.
6. WHEN DESIGNING AND/OR INSTALLING VENTILATION OR AIR CONDITIONING SYSTEM FOR ANY TYPE OF BUILDING, IT IS IMPORTANT TO ENSURE THAT THIS SYSTEM INTAKES AIR FROM OUTSIDE. CO2 ENRICHMENT AT ANY GIVEN TIME. THIS PROCEDURE WILL BE IN FULL FORCE. PRESSURE BLOWN MANTAINED.
7. ALL INTERIOR WALLS & PARTITIONS IF APPLICABLE TO BE FIRE RATED & INDEPENDENT OF SPRUNG STRUCTURE.

PICKLEBALL
 120'-0" x 330'-0"
 16 COURTS

CALGARY, ALBERTA, CANADA

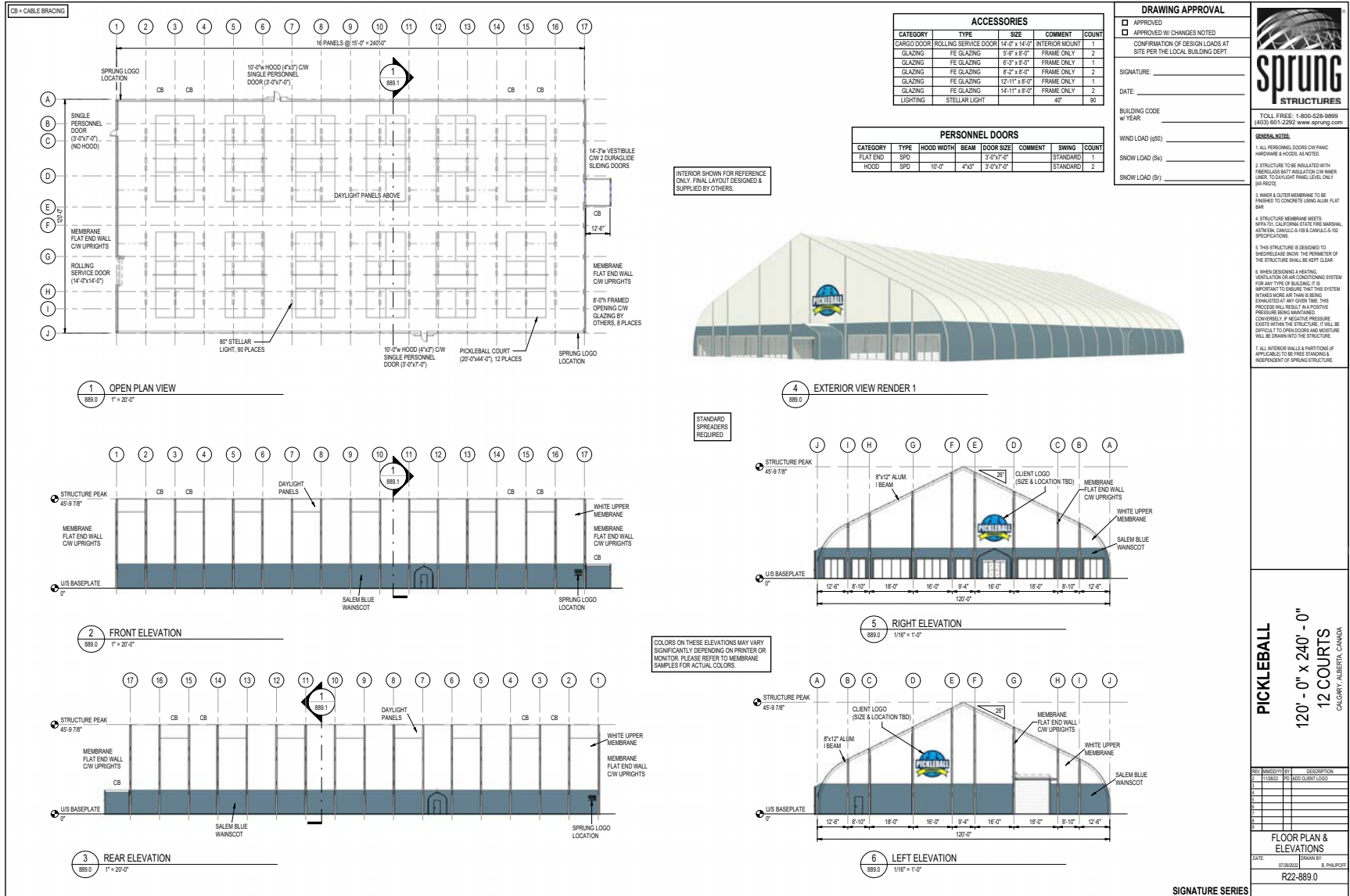
REV	DESCRIPTION
0	
1	ADD ALBERTA LOADS
2	
3	
4	
5	

FLOOR PLAN & ELEVATIONS

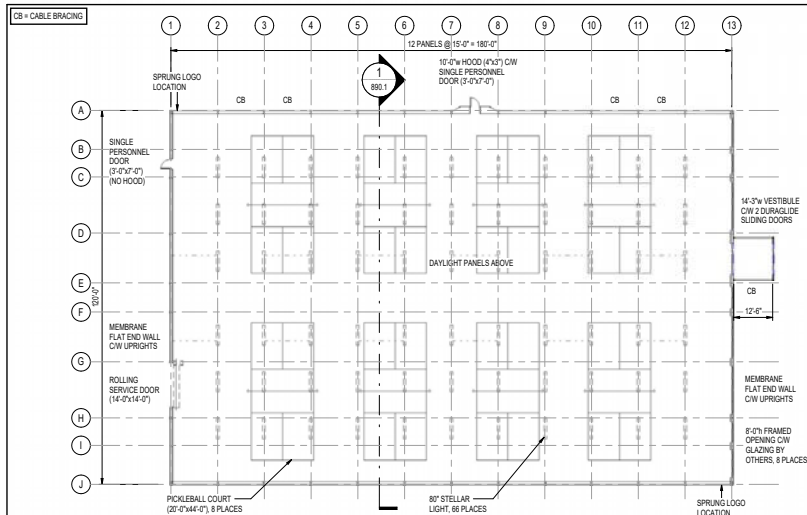
DATE: 07/26/2023
 DRAWN BY: B. PHILPOFF
 R22-885.0

SIGNATURE SERIES

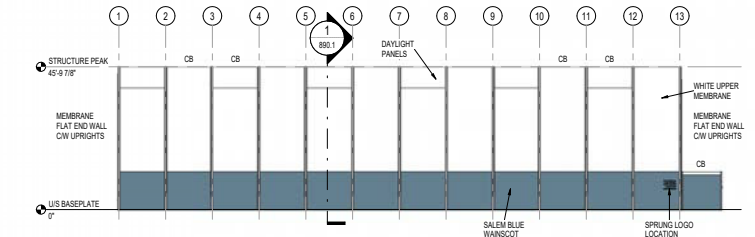
12 COURT LAYOUT



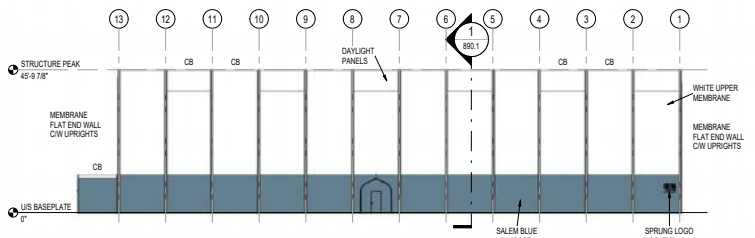
8 COURT LAYOUT



1 OPEN PLAN VIEW
880.0 1/16" = 1'-0"



2 FRONT ELEVATION
880.0 1/16" = 1'-0"



3 REAR ELEVATION
880.0 1/16" = 1'-0"

INTERIOR SHOWN FOR REFERENCE ONLY. FINAL LAYOUT DESIGNED & SUPPLIED BY OTHERS.

STANDARD SPREADERS REQUIRED

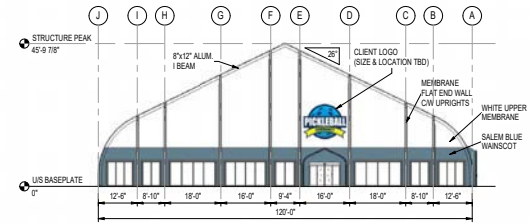
COLORS ON THESE ELEVATIONS MAY VARY SIGNIFICANTLY DEPENDING ON PRINTER OR MONITOR. PLEASE REFER TO MEMBRANE SAMPLES FOR ACTUAL COLORS.

ACCESSORIES				
CATEGORY	TYPE	SIZE	COMMENT	COUNT
CARGO DOOR	ROLLING SERVICE DOOR	14'-0" x 14'-0"	INTERIOR MOUNT	1
GLAZING	FE GLAZING	5'-0" x 8'-0"	FRAME ONLY	2
GLAZING	FE GLAZING	8'-0" x 8'-0"	FRAME ONLY	1
GLAZING	FE GLAZING	8'-0" x 8'-0"	FRAME ONLY	2
GLAZING	FE GLAZING	12'-11" x 8'-0"	FRAME ONLY	1
GLAZING	FE GLAZING	14'-11" x 8'-0"	FRAME ONLY	2
LIGHTING	STELLAR LIGHT		40"	86

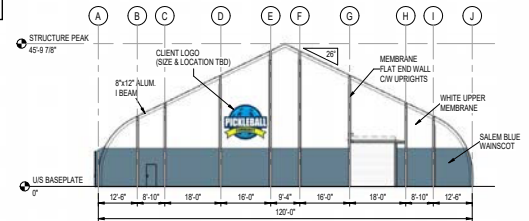
PERSONNEL DOORS							
CATEGORY	TYPE	HOOD WIDTH	BEAM	DOOR SIZE	COMMENT	SWING	COUNT
FLAT END	SPD	10'-0"	4"x3"	3'-0"x7'-0"	STANDARD		1



4 EXTERIOR VIEW RENDER 1
880.0



5 RIGHT ELEVATION
880.0 1/16" = 1'-0"



6 LEFT ELEVATION
880.0 1/16" = 1'-0"

DRAWING APPROVAL

APPROVED
 APPROVED BY CHANGES NOTED
 CONFIRMATION OF DESIGN LOADS AT SITE PER THE LOCAL BUILDING DEPT.

SIGNATURE: _____
 DATE: _____

BUILDING CODE # _____
 WIND LOAD (#5): _____
 SNOW LOAD (#4): _____
 SNOW LOAD (#5): _____

GENERAL NOTES:

1. ALL PERSONNEL DOORS ON FRAMING MEMBRANE & HOOD, AS NOTED.
2. STRUCTURE TO BE INSULATED WITH FIBERGLASS BATT INSULATION ON FRAMER LINER, TO CAROLIGHT PANEL LEVEL ONLY (NO HOOD).
3. INNER & OUTER MEMBRANE TO BE FINISHED TO CONCRETE USING ALUM. FLAT BATT.
4. STRUCTURE MEMBRANE MEETS NFPA 701, CALIFORNIA STATE FIRE MARSHAL, AERIAL, CANALIC 518 & CANALIC 512 SPECIFICATIONS.
5. THIS STRUCTURE IS DESIGNED TO BE REMOVED. SHOW THE FOOTPRINT OF THE STRUCTURE SHALL BE KEPT CLEAR.
6. WHEN REDRIVING AND/OR THE VENTILATION OR AIR CONDITIONING SYSTEM FOR ANY TYPE OF BUILDING, IT IS IMPORTANT TO ENSURE THAT THIS SYSTEM INTRODUCES AIR FROM OUTSIDE. EMPOWERED AT ANY GIVEN TIME, THIS PROCEDURE WILL BE IN FULL FORCE. PRESSURE BEING MAINTAINED. CONCRETE & REBAR PRESSURE EXISTS WITHIN THE STRUCTURE, IT WILL BE DIFFICULT TO OPEN DOORS AND MEMBRANE WILL BE DRAWN INTO THE STRUCTURE.
7. ALL INTERIOR WALLS & PARTITIONS IF APPLICABLE TO BE FREE STANDING & INDEPENDENT OF SPRUNG STRUCTURE.

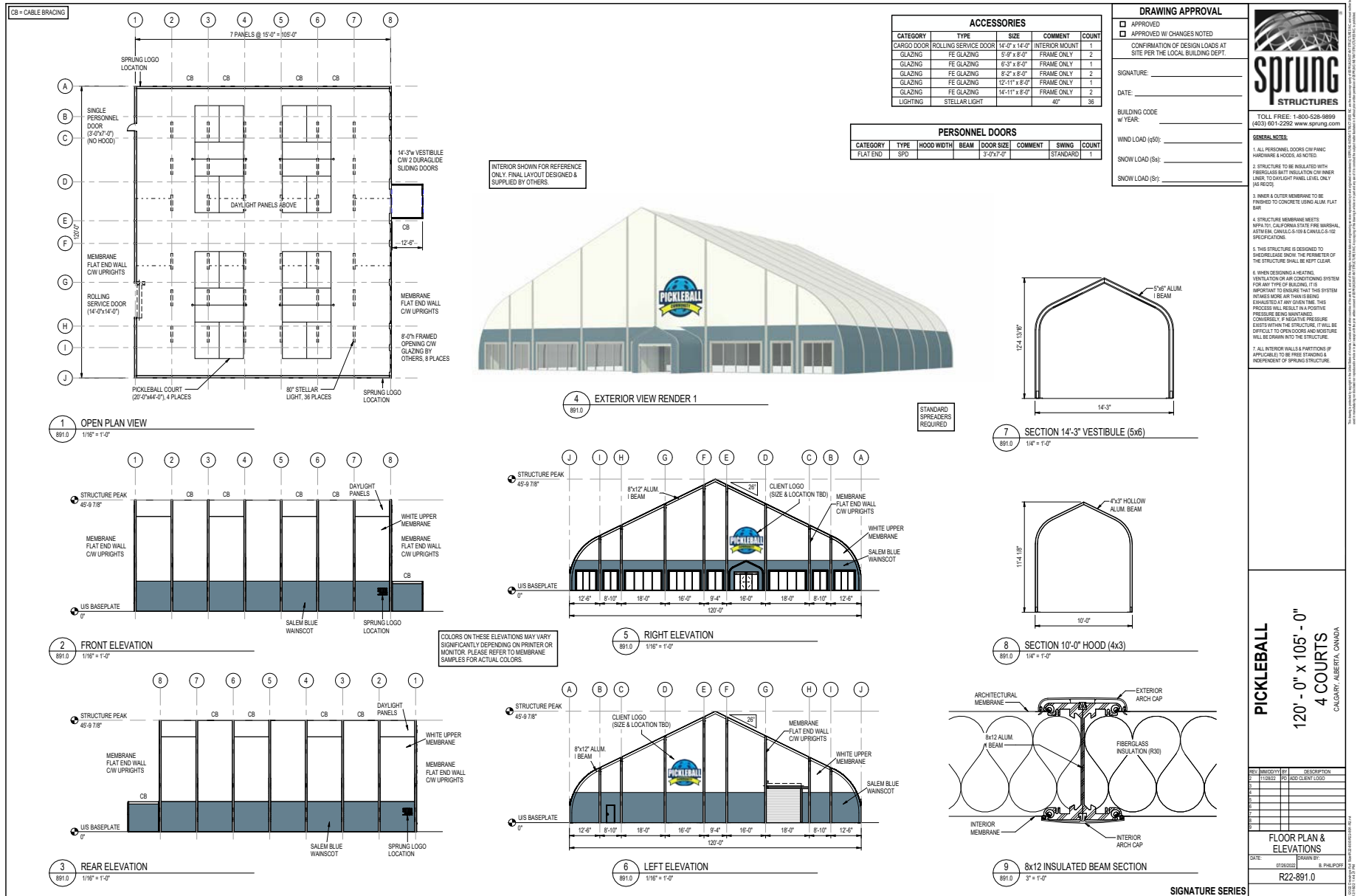
PICKLEBALL
 120' - 0" x 180' - 0"
 8 COURTS
 CALGARY, ALBERTA, CANADA

REV	DATE	DESCRIPTION
0	11/09/21	ISSUE FOR PERMIT
1	11/09/21	ADD CLIENT LOGO
2		
3		
4		
5		
6		
7		
8		

FLOOR PLAN & ELEVATIONS

DATE: 07/26/2022 DRAWN BY: B. PHILIPPO
 R22-890.0

4 COURT LAYOUT





**Build
Faster**

ABOUT SPRUNG

Since 1887, we've been engineering the world's most innovative, versatile and reliable building solutions.

Sprung Structures provides rapid-response buildings to a wide range of leading businesses and organizations including global armed forces, the natural resources industry, the manufacturing, commercial gaming and education sectors, disaster recovery, healthcare and aviation, as well as to the sports and recreation industry. Our patented tensioned membrane technology outperforms other building alternatives with a faster, better build.



I would highly recommend a Sprung building to anyone interested in constructing an 'out-of-the-box' facility."

– Pastor Olin McSherry,
RWOC Director of Development
Relentless Life Center



**KEEP THE BALL
IN YOUR COURT**

Let's talk about the design and cost
for your custom pickleball facility

sprung.com/pickleball | info@sprung.com | 1 800 528 9899